

FIG. 1. FRONT VIEW

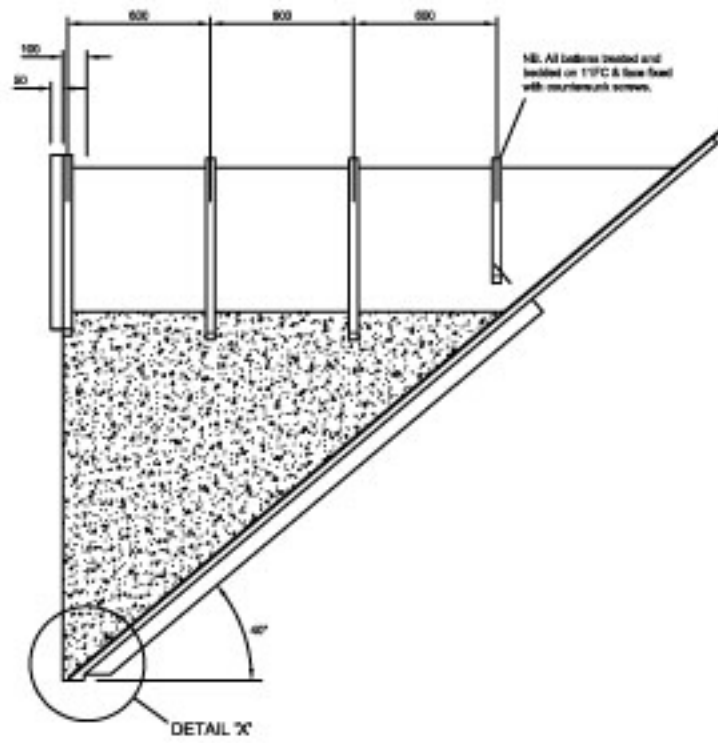


FIG. 2. VIEW ON ARROW 'A'

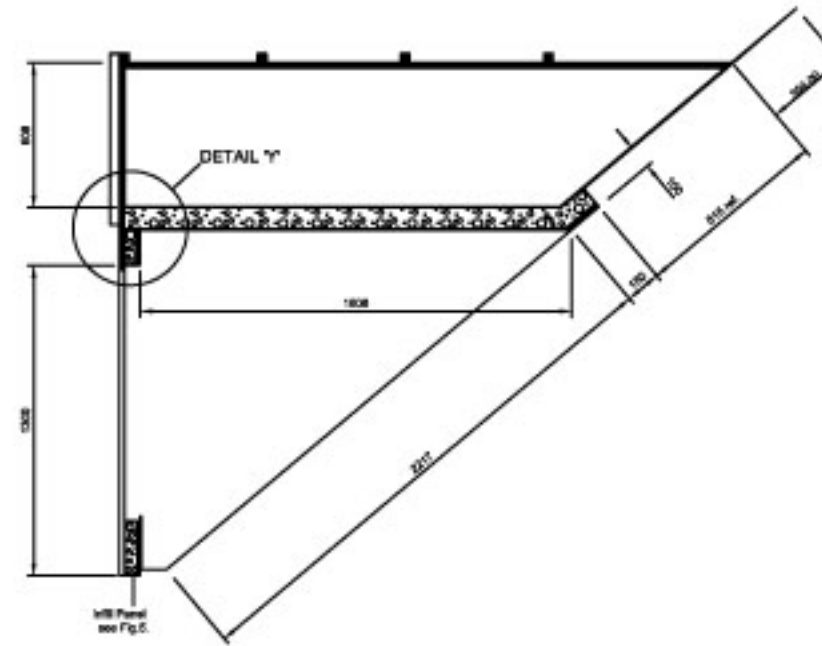


FIG. 3. SECTION THROUGH 'B-B'

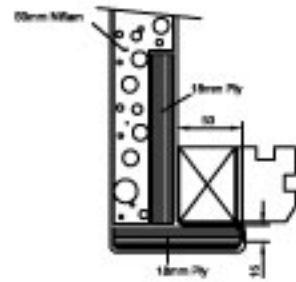


FIG. 4. SECTION THROUGH 'C-C'

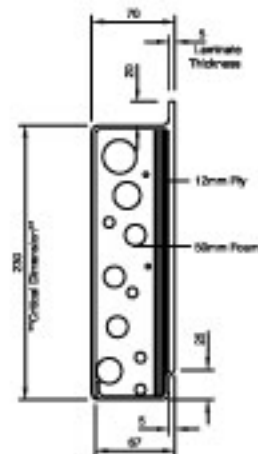


FIG. 5. SECTION THROUGH INFILL PANEL
[NB. Infill Panel 1338mm Long]

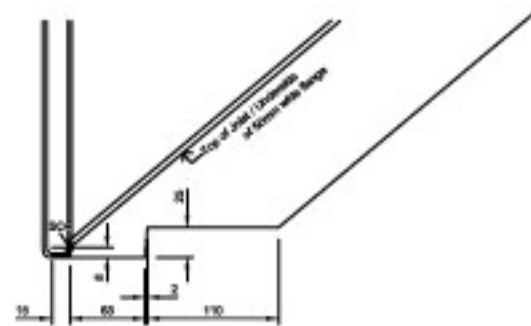


FIG. 6. DETAIL 'X'

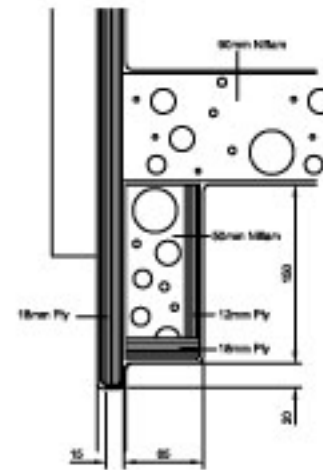


FIG. 7. DETAIL 'Y'



Indicates 'Roughcast' areas

DO NOT SCALE

ALL RADII 8MM UNLESS OTHERWISE STATED

EXTERNAL FINISH

White

COLOUR **WHITE**

FINISH TEXTURED(ROUGHCAST)

INTERNAL FINISH

COLOUR **WHITE**

COLOUR **White: 00.E.55.**

FINISH **SMOOTH**

CONSTRUCTION

GRP LAY-UP **6mm Layup**

CORE **3 Layers On / Foam / 1 Layup to Finish.**

INSULATION **Nilflam Foam : 50mm and 90 mm (See G.A)**

REVISIONS

PROJECT

DATE

DRAWN BY

REF : NO :

APPROVED

TITLE :

**1740 W x 1300 H x 40 Degree
PITCHED**