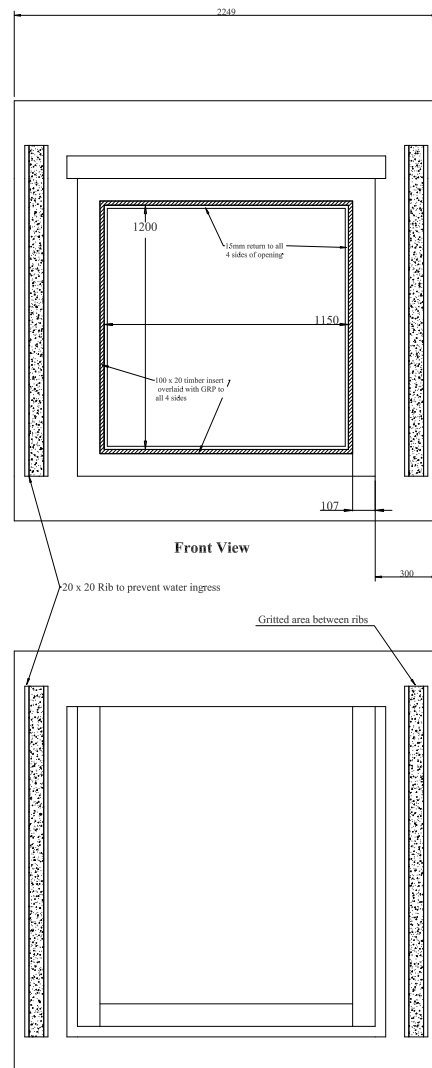


100mm PU Foam Insulation



Plan View

NOT TO SCALE

Constructed from 100mm PU Foam Insulation pressed onto 4mm plywood both sides and overlaid with GRP with Flocoat finish.

Sizes are approximate and can be changed according to requirements.

Roof shape shown as flat but other designs can be manufactured.

Lead flashing to be fitted under bottom edge of dormer and then carried over roof tiles to allow to run off.

Pitch of roof can be varied.

External texture to customers specification.

Drawing No

121604/01

Drawn by

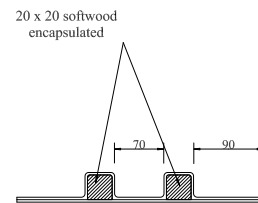
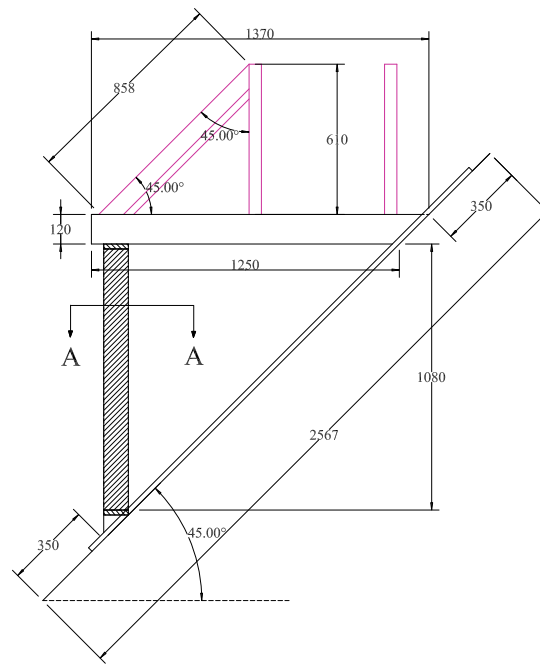
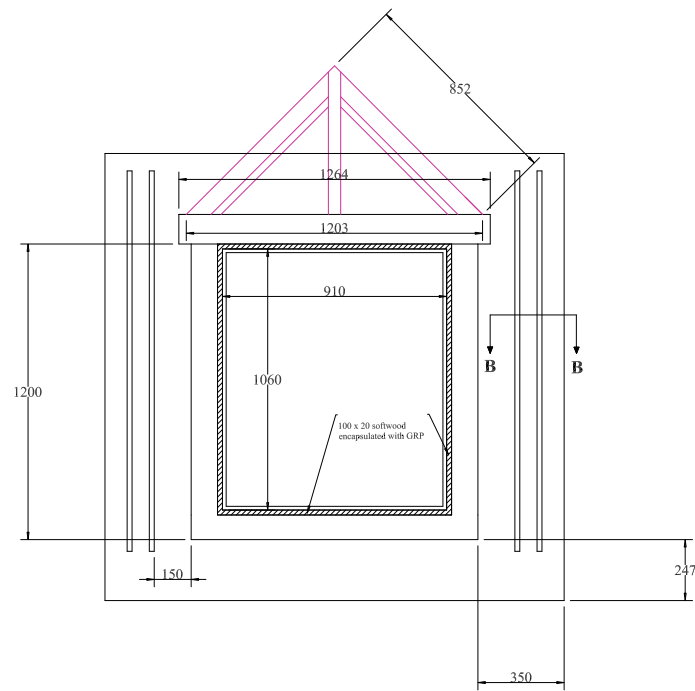
RT

Basic Dormer

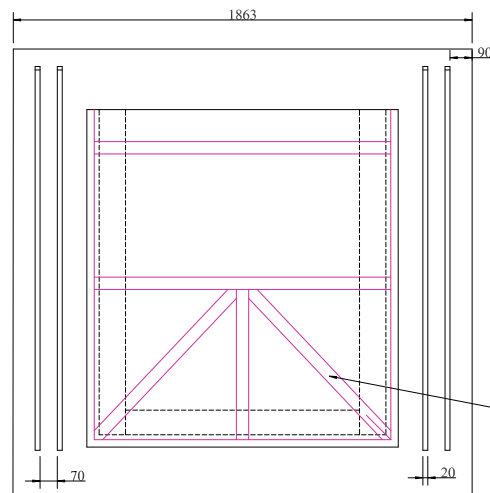
45deg Roof Pitch

Date

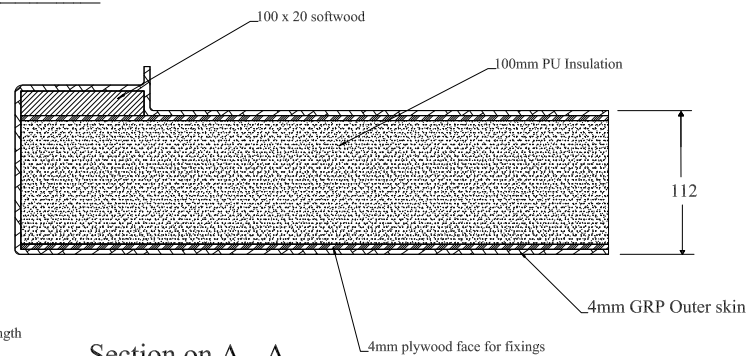
16th April 2012



Section on B - B



Corner timber is 1038mm at max length



Section on A - A

Harron Homes
Kenilworth Dormer
900 x 1050 Window

Drawn by

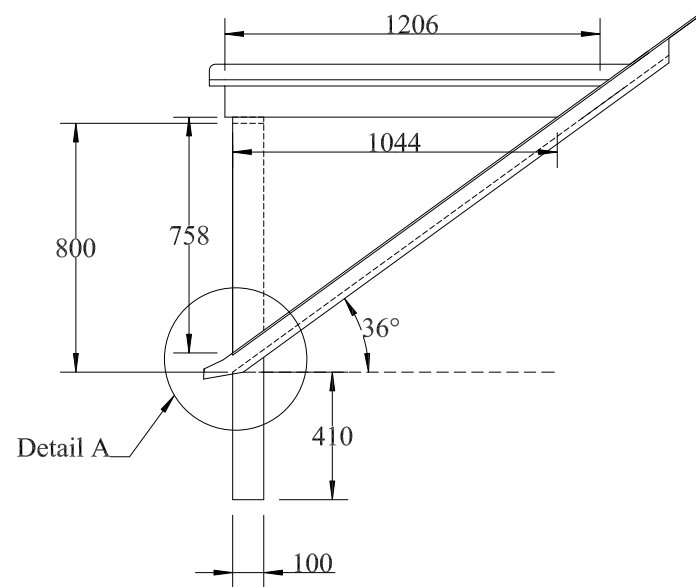
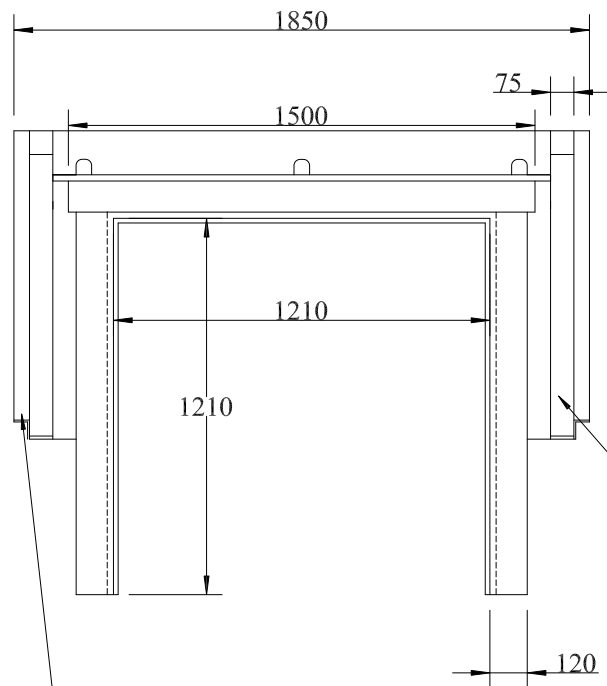
RT

Date

11/05/2012

Drg No

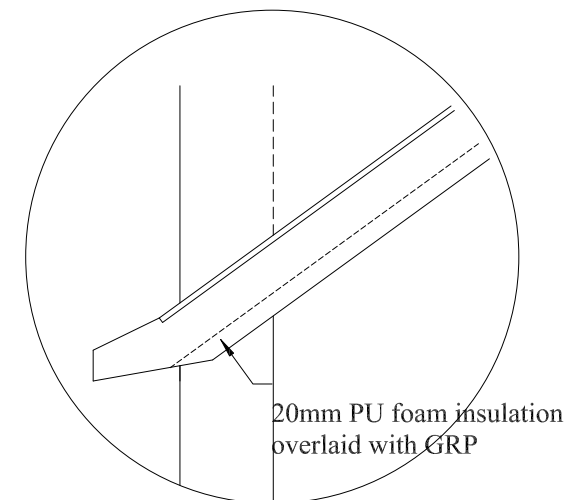
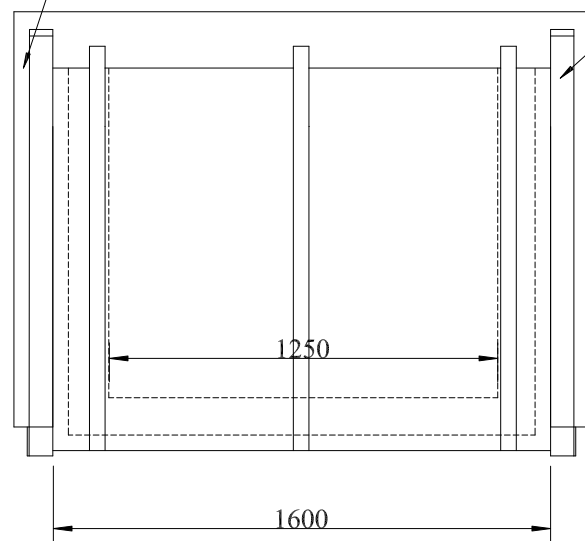
110512/HHK/01



Detail A

Mounting flange

Built in gutter



20mm PU foam insulation overlaid with GRP

Detail A